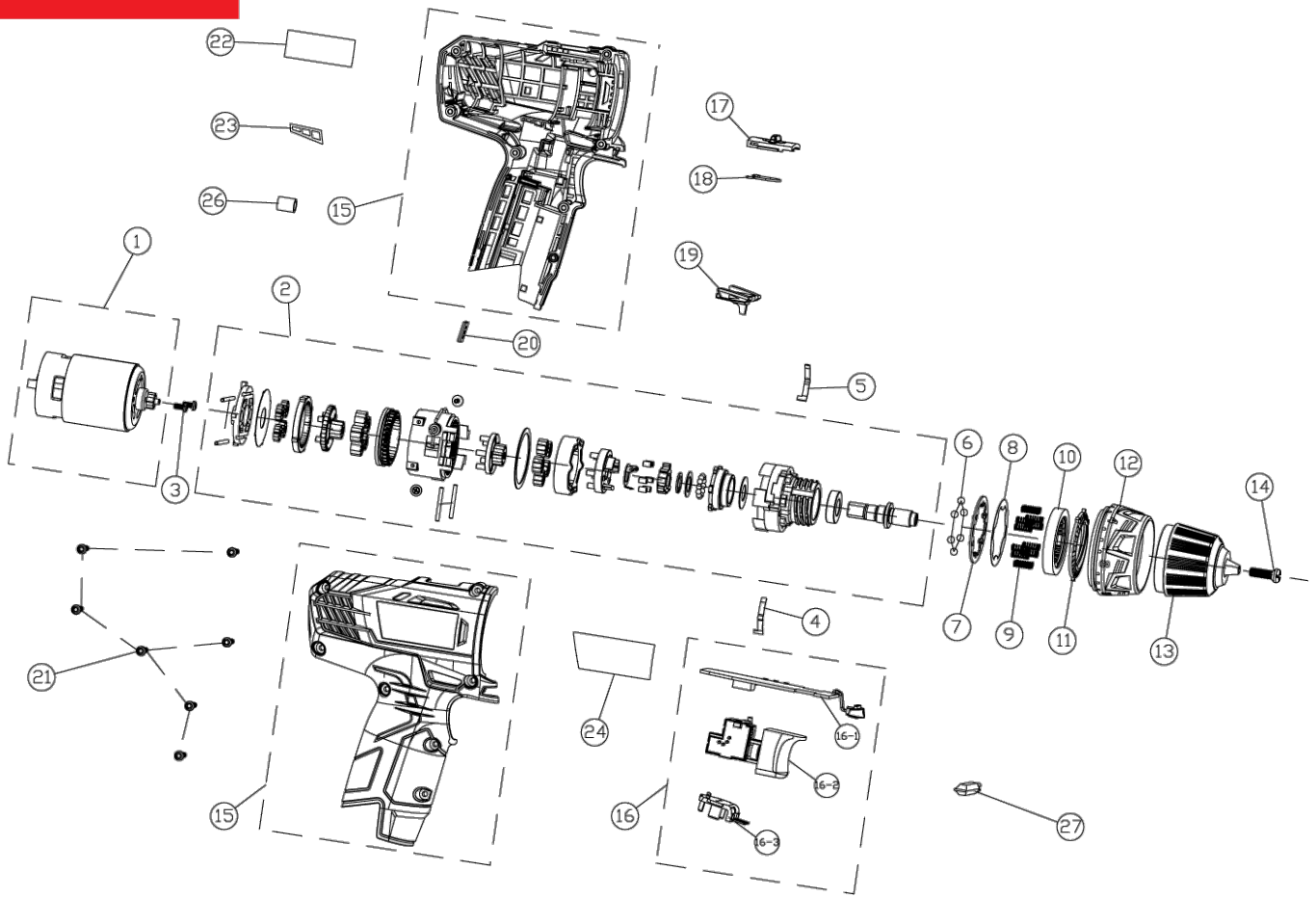


12V Lithium-ion 2 Speed Drill Driver with 2 Batteries

5133001802 - R12DD-LL13S - 5133001802#1





Position	Quantity	Description	Part number	EAN
001	1	MOTOR ASSEMBLY	5131030960	
002	1	GEAR BOX ASSY	5131030961	
003	2	M SCREW CH M3.0 L=6MM BID1201	5131011422	
004	1	SPRING	5131030962	
005	1	SPRING	5131030963	
006	6	BALL DIA 5/32in ID700RE CSD480 CHP12	5131017805	
007	1	WASHER	5131030964	
008	1	WASHER	5131030966	
008	1	WASHER	5131030965	
009	12	SPRING	5131030967	
010	1	HOLDER	5131030968	
011	1	COUPLING SLEEVE	5131030969	
012	1	COUPLING SLEEVE	5131030970	
013	1	CHUCK	5131030971	
014	1	SCREW	5131030096	
015	1	HOUSING SET ASSY	5131030972	
016	1	SWITCH ASSEMBLY	5131030973	
016-1	1	PRINTED CIRCUIT	5131030974	
016-2	1	SWITCH ASSEMBLY	5131030975	
016-3	1	HOLDER	5131030976	
017	1	PUSH-BUTTON	5131030977	
018	1	SPRING	5131030978	
019	1	PUSH BUTTON	5131030979	
020	1	CLIP	5131030100	
021	7	SCREW	5131019437	
022	1	LABEL	5131030980	
023	1	LABEL	5131030122	
024	1	LABEL	5131030981	
026	1	BUSH	5131028202	
	2	BATTERY 12V-DC 1,3AH LI-ION	5131030110	
	1	SWISS ADAPTER	5131027809	
	1	CHARGER EU 1HR 12V-DC 1,5A LI	5131030119	
027	1	PIECE PLUS FOURNI,ANNULER VOTRE CDE	5132001236	