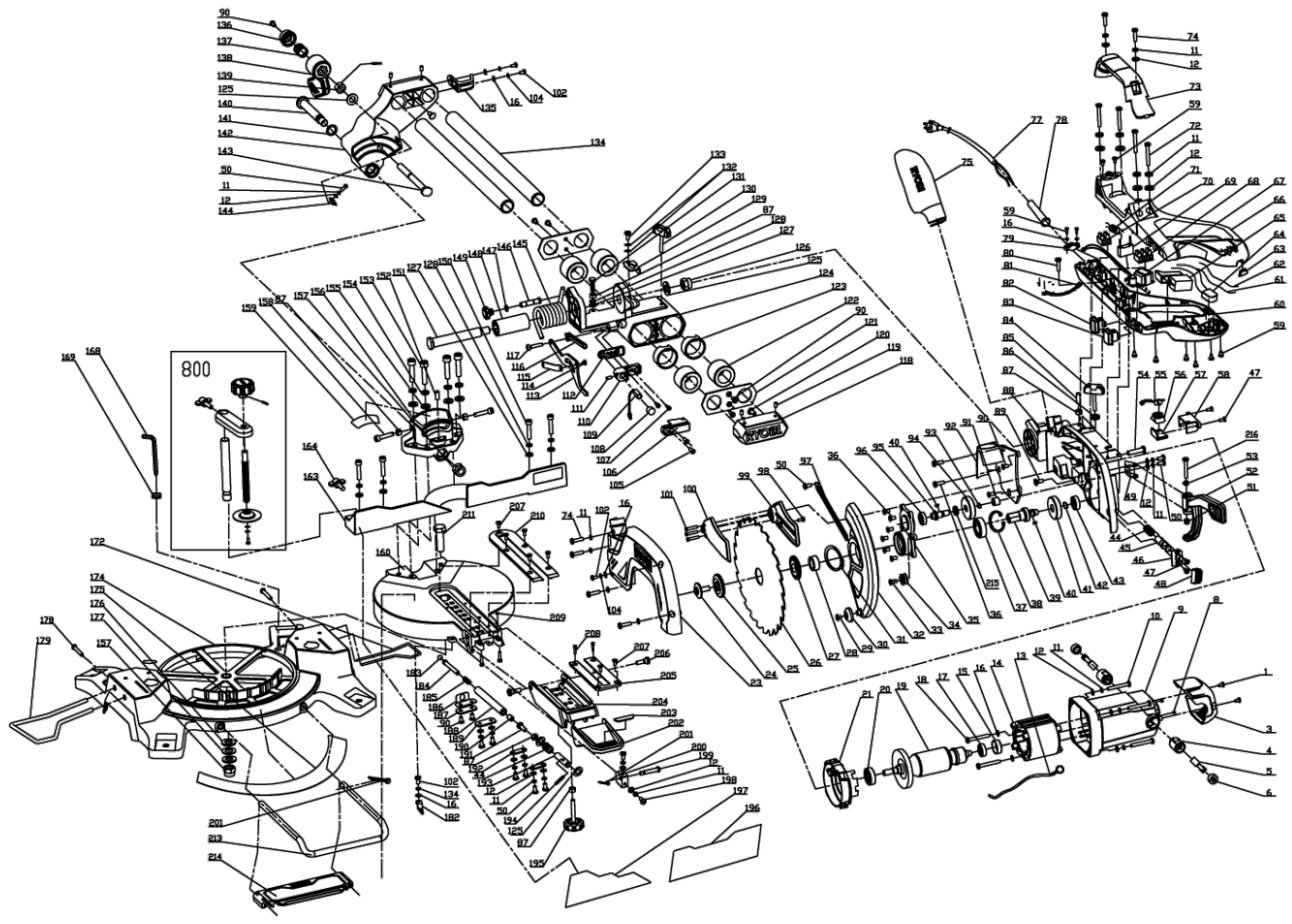


EMS216L 216mm Compact Slide Mitre Saw

5133001197 - EMS216L - 5133001197#1





Position	Quantity	Description	Part number	EAN
001	2	SCREW	5131030760	
003	1	COVER	5131030761	
004	2	BRUSH HOLDER	5131030762	
005	2	CARBON BRUSH	5131030764	
006	2	BRUSH COVER	5131030765	
008	2	SCREW	5131030766	
009	1	MOTOR HOUSING	5131030763	
010	4	SCREW	5131030766	
011	25	SPRING WASHER	5131030768	
012	21	WASHER	5131030769	
013	1	CONNECTION CABLE	5131030770	
014	1	ELECTRIC FIELD	5131030771	
015	1	BEARING BUSH	5131030772	
016	8	WASHER	5131030773	
017	1	BALL BEARING	5131030774	
018	2	SCREW	5131030777	
019	1	ROTOR	5131030775	
020	1	BALL BEARING	5131030776	
021	1	SUPPORTING RING	5131030778	
023	1	CUTTING GUARD	5131030779	
024	1	BOLT	5131030780	
025	1	CLAMPING FLANGE	5131030781	
027	1	CLAMPING FLANGE	5131030782	
028	1	SLEEVE	5131030783	
030	1	ROLLER	5131030784	
031	1	RETAINING RING	5131030785	
032	1	GUARD	5131030786	
033	1	SCREW	5131030787	
034	1	INTERMEDIATE WHEEL	5131030788	
035	1	GEAR BOX COVER	5131030789	
036	8	SCREW	5131030802	
037	1	BALL BEARING	5131030790	
038	1	RETAINING RING	5131030791	
039	1	GEAR SHAFT	5131030792	
040	2	KEY	5131030793	
041	1	GEAR	5131030794	
042	1	RETAINING RING	5131030795	
043	1	BALL BEARING	5131030796	
044	2	SPRING	5131030803	
045	1	LOCK PIN	5131030804	
046	1	CLAMPING PLATE	5131030805	
047	4	SCREW	5131030806	
048	1	KNOB	5131030807	
049	1	HOLDER	5131030808	
050	9	SCREW	5131030809	
051	1	NUT	5131030810	
052	1	OPERATING HANDLE	5131030811	
053	1	SPRING	5131030812	
054	1	SCREW	5131030813	
055	1	LAMP	5131030814	

Position	Quantité	Désignation	Référence	EAN
056	1	LAMP HOUSING	5131030815	
057	1	LENS	5131030816	
058	1	HOLDER	5131030817	
059	10	SCREW	5131030818	
060	1	HANDLE HALF	5131030819	
061	1	CONNECTION WIRE	5131030820	
062	1	CONNECTION WIRE	5131030821	
063	1	COVER	5131030822	
064	1	INDICATOR LIGHT	5131030823	
065	1	SWITCH ASSEMBLY	5131030824	
066	1	HANDLE COVER	5131030825	
067	1	TRANSFORMER	5131030826	
068	1	TERMINAL PLUG	5131030827	
069	1	CAPACITOR	5131030828	
070	1	TERMINAL PLUG	5131030829	
071	1	CHOKING COIL	5131030830	
072	4	SCREW	5131030831	
073	1	HANDLE	5131030832	
074	6	SCREW	5131030833	
075	1	DUST BAG	5131030949	
077	1	POWER CORD	5131030834	
078	1	PROTECTION SLEEVE	5131030835	
079	1	CLAMP	5131030836	
080	1	SCREW	5131030837	
081	1	CONNECTION WIRE	5131030838	
082	1	SWITCH ASSEMBLY	5131030839	
083	1	SWITCH ASSEMBLY	5131030840	
084	1	TURNING KNOB	5131030841	
085	1	SCREW	5131030842	
086	1	NUT	5131030843	
087	6	NUT	5131030844	
088	1	CUTTING GUARD	5131030845	
089	1	SCREW	5131030846	
090	9	SCREW	5131030847	
091	1	NEEDLE BEARING	5131030797	
092	1	HOUSING COVER	5131030848	
093	1	RETAINING RING	5131030798	
094	1	GEAR	5131030799	
095	1	GEAR SHAFT	5131030800	
096	1	BEARING	5131030801	
097	1	SPRING	5131030849	
098	1	SCREW	5131030850	
099	1	COVER	5131030851	
100	1	COVER	5131030852	
101	3	RIVET	5131030853	
102	4	SCREW	5131030854	
104	5	SPRING WASHER	5131030855	
105	2	SCREW	5131030856	
106	1	HOLDER	5131030857	
107	2	SCREW	5131030858	

Position	Quantité	Désignation	Référence	EAN
108	1	LENS	5131030859	
109	1	LASER	5131030860	
110	1	HOLDER	5131030861	
111	1	SCREW	5131030862	
112	1	HOLDER	5131030863	
113	1	LEVER	5131030864	
114	1	RIVET	5131030865	
115	1	LEVER	5131030866	
117	1	SCREW	5131030867	
118	1	SCREW	5131030867	
119	4	SCREW	5131030869	
120	2	RUBBER BUMPER	5131030870	
121	2	BEARING END PLATE	5131030871	
122	4	BEARING	5131030872	
123	2	BEARING BUSH	5131030873	
124	1	BRACKET	5131030874	
125	4	WASHER	5131030875	
126	1	NUT	5131030876	
127	5	WASHER	5131030877	
128	5	SPRING WASHER	5131030878	
129	1	SUPPORT BRACKET	5131030879	
130	1	SUPPORT BRACKET	5131030879	
131	1	SCREW	5131030881	
132	2	WASHER	5131030882	
133	1	SCREW	5131030883	
134	2	TUBE	5131030884	
135	1	HOLDER	5131030885	
136	1	CAP	5131030886	
137	1	SPRING	5131030887	
138	1	LOCK	5131030888	
139	1	NUT	5131030889	
140	1	AXLE	5131030890	
141	1	WASHER	5131030891	
142	1	BRACKET	5131030892	
143	1	AXLE	5131030893	
144	1	INDICATOR	5131030894	
145	1	TORSION SPRING	5131030895	
146	1	TORSION SPRING	5131030895	
147	1	WASHER	5131030897	
148	1	SEALING SLEEVE	5131030898	
149	1	KNOB	5131030899	
150	6	SCREW	5131030900	
151	1	AXLE	5131030901	
152	1	SCREW	5131030902	
153	4	SCREW	5131030903	
154	4	SPRING WASHER	5131030904	
155	4	WASHER	5131030905	
156	1	BRACKET	5131030906	
157	2	NUT	5131030907	
158	2	SCREW	5131030908	

Position	Quantité	Désignation	Référence	EAN
159	1	LABEL	5131030953	
160	1	TURN TABLE	5131030909	
163	1	FENCE	5131030910	
164	1	WINGED SCREW	5131030911	
168	1	ALLEN KEY	5131030950	
169	1	RUBBER SLEEVE	5131030912	
172	1	EXTENSION	5131030951	
174	1	GROUND PLATE	5131030913	
175	1	LABEL	5131030956	
176	2	WASHER	5131030914	
177	3	WASHER	5131030915	
178	2	SCREW	5131030916	
179	1	EXTENSION	5131030952	
182	1	INDICATOR	5131030917	
183	1	BALL	5131030918	
184	1	AXLE	5131030919	
185	1	SPRING	5131030920	
186	1	SUPPORT BRACKET	5131030921	
187	1	PLATE	5131030922	
188	1	TUBE	5131030923	
189	1	PLATE	5131030924	
190	1	SCREW	5131030925	
191	1	SCREW	5131030926	
192	2	PLATE	5131030927	
193	1	LEVER	5131030928	
194	1	SPLIT PIN	5131030929	
195	1	TURNING KNOB	5131030930	
198	2	SCREW	5131030931	
199	1	AXLE	5131030932	
200	1	CAM	5131030933	
201	2	SPLIT PIN	5131030934	
202	1	HANDLE	5131030935	
203	1	PLATE	5131030936	
204	1	EXTENSION	5131030937	
205	1	ANTI-CHIPPING DEVI.	5131030938	
206	2	SCREW	5131030939	
207	7	SCREW	5131030940	
208	4	SCREW	5131030941	
209	2	WASHER	5131030942	
210	1	ANTI-CHIPPING DEVI.	5131030943	
211	1	SCREW	5131030944	
213	1	EXTENSION	5131030945	
214	1	EXTENSION	5131030946	
215	1	WASHER	5131030954	
216	1	SCREW	5131030947	
800	1	CLAMP	5131030948	
	1	SWISS ADAPTER	5131027809	